



Teams,

Barber Staging, Load In and RV assignments are in this document. The load in order and the staging maps are color coded for ease. Teams are broken up into Groups, please stage in your designated color matched area in the fashion showed on the map for quicker load in.

Upon arrival, please, park in an orderly fashion

Load in will start with Group 1 at 9am Thursday May 16th.

NO VEHICLES OF ANY KIND WILL BE PERMITTED IN THE PADDOCK UNTIL AFTER LOAD IN IS COMPLETE.

Any comments, please email jwade@motoamerica.com

**Early Arrival Staging for All Rows + RV Parking
Lot Across from Museum**



Thursday Morning Staging

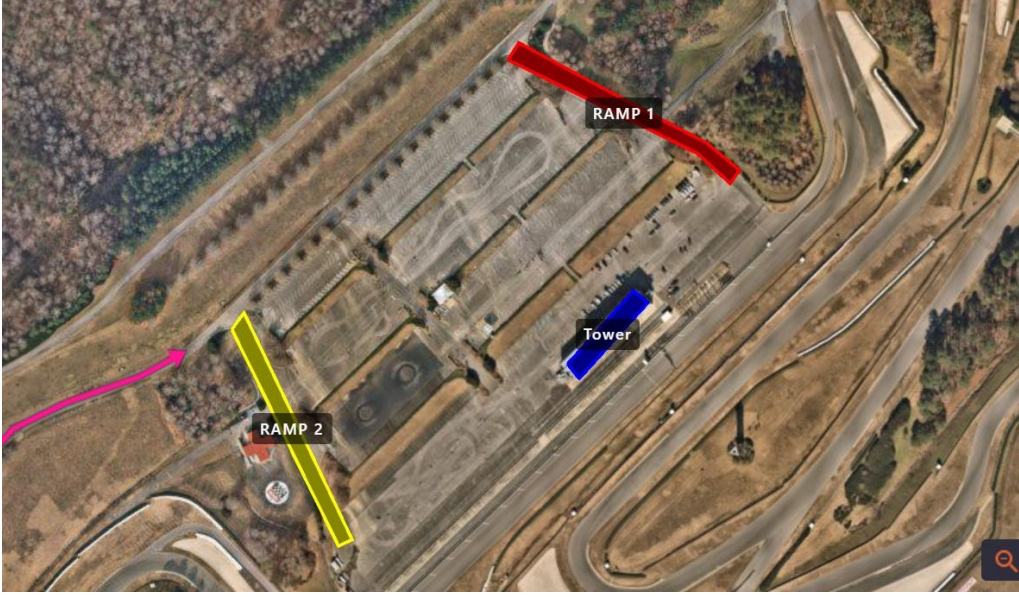
- Blue Area – Group 1 & 2
- Red Area – Group 3



Groups 4 & 5 –to stay in LOT G until called.



Load IN Entry Points (Ramp 1 RED/Ramp 2 Yellow)



LOAD IN ORDER

GROUP 1	GROUP 3	GROUP 4	Revzilla
RAMP 1	RAMP 2	RAMP 2	Velocity
Strack	Legacy Dental	PDR	Arion
Top Pro	Jones Honda	JBJR	Black Ice
Tytlers 2	AMD	Beavan	Crash Banicots
Tytlers 1	Super Carl	Chase Black	Ice Barn
ATTACK YAMAHA	Karns Performance	TB	DC Racing
RAMP 1 TOWER	Elliott Racing	Righteous	MotoMoto
Royal Enfield	Edge	RadMav	GROUP 5
Rodio	Team Brazil	Doboer	RAMP 1
Motorsport Exotica	Air Onze	Fresh Face	High Rev
RAMP 2	JBR	Escape/Stretch Lab	JPMD Inc
HSBK	Kings kamp	JPI	Gallusser
M4	BPR	Triple M	Kayes
M4 Hospitality	Smooth Fab	TCB	Koltz
ADR	Speed Demon	Blackhawk	DRE
Shiebe	Bad Boys	Red Lobo	Powersport Supply
Thrashed	Duffy	Cycle Pros	S1 Racing
Flow4Law	Pistris	Chiefs	Shane Maggs
RAMP 1 TOWER	Vestment	AeroJWalk	Spillman
MP13	Fernandez	Zinc AL 32	Jons Racing
Wristin Grigg	Black Label	D&D Certified	Weyh
Sportbike TG	Hollingsworth	Nashville	Williams
Ghetto Customs	Bsb	NY Safety Team	Wrt985
GROUP 2	BPM	Bartcon	Grant Motors
RAMP 2	Royalty	Wolfe	
Altus	Koch	Dirty T	
Northeast Cycle	Triple M	TSE	
N2	Owen Williams	Durban	
Giaccamoto	Funded by Wife	Hopkins	
Orange Cat	Empressive Earth	Purple Haze	
RAMP 1	BPR	Pure Attitude	
Real Steel	Dasilva Bros	Shurtech	
Tom Wood	Rothenberger	Seethaler	
3D	Privateer	Silva Bros	
Vance & Hines		Limitless	
Rahal Ducati		Barbour	
		SONS of Barmicil	

RV ASSIGNMENTS

RV Camping is on the 2nd and 3rd teir, you may park upon arrival anytime THURSDAY starting at 7AM. Spaces are Assigned and you must park within the white lines of your allotted space.

Non-Powered Spaces are marked.

1	Vendor	
2	Vendor	
3	Vendor	
4	A.Rothenberger	
5	P. Doyle	
6	K. Horney	
7	L. Silva	
8	G. Crawford	
9	K. Kearcher	
10	J. Strack	
11	C.Woodworth	
12	DO NOT USE	
13	Steel Commander	
14	T. Ivanoff	
15	C.Black	
16	N.Seethaler	
17	K.Wyman	
18	W.Mitchell	
19	T. Sadler	
20	C.Giachetto	
21	G.Angella	
22	B.Faas	

23	S.Osowski	
24	R.Vest	
25A	Rossi	Non-Powered
25B	J. Lewis	Non-Powered
25C	MA	Non-Powered
26	N.Cox	
27	M.Merical	
28	A.Sneed	
29	M.Junge	
30	C.Ulrich	
31	S.Salopek	
32	S.Tyler	
33	D.Walker	
34	H.Dunham	
35	S.Dowling	
36	JD Beach	
37	K.Pappas	
38	H.Gillim	
39	H.Gillim	Non-Powered
40	S.Crawshay-Hall	Non-Powered
41	C.Alexander	
42	T.Watson	
43	T.Wyman	
44	H.Bicknese	
45	T.Lackey	
46	R.Hobbs	
47	E.Dunca	
48	K. Haines	
49	D.Sheldon	Non-Powered
50	Events	Non-Powered

Power Box Map

